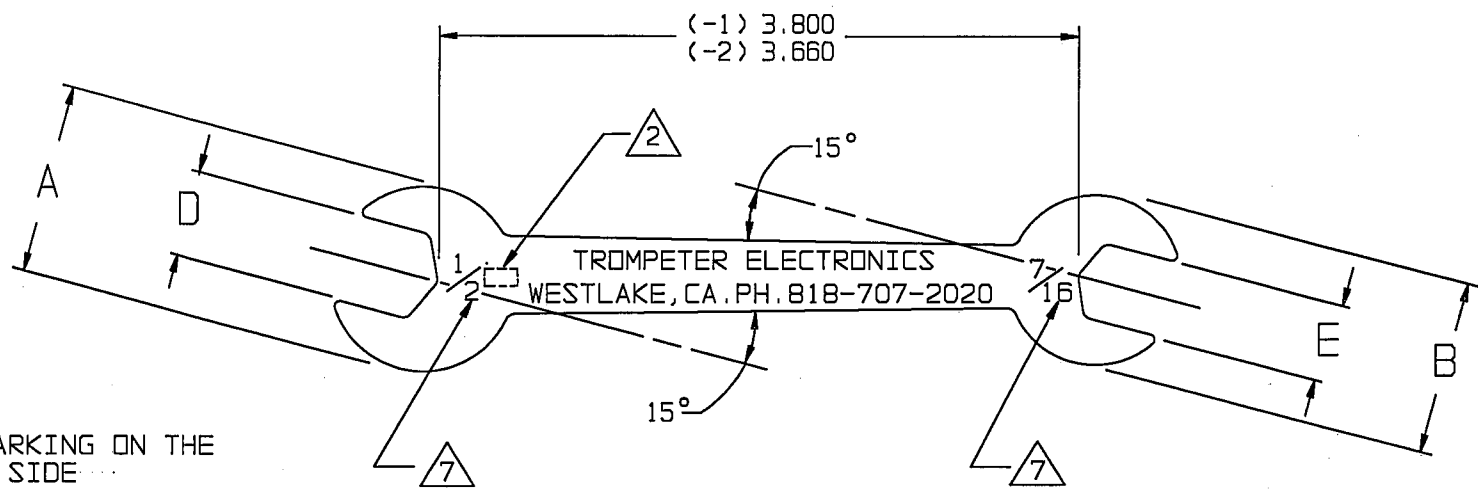


# RED INDICATES ORIGINAL

DATA CONTAINED IN THIS DOCUMENT IS PROPRIETY TO TROMPETER ELECTRONICS INC. AND SHALL NOT BE DISCLOSED, COPIED, OR USED FOR PROCUREMENT OR MANUFACTURE WITHOUT EXPRESS WRITTEN PERMISSION.

DASH NO	MODEL NO	A DIM	B DIM	C DIM	D DIM	E DIM
-1	AT1/2	1.068	.982	4.965	.504-.510	.442-.448
-2	AT2/2	.945	.856	4.485	.378-.384	.316-.322

REVISIONS			010-0023		SH
REV	EO	DESCRIPTION	DWN	APPROVED	DATE
E	12690	ADDED: NOTE 7 AND 8; SEE ECO	DKC	<i>[Signature]</i>	1/29/99



8. NO MARKING ON THE BACK SIDE

7 -2 MARKING SHOULD BE 3/8 AND 5/16 FROM LEFT TO RIGHT

-1 SHOWN

6. TFS-1A (TOTAL BUILD-UP .000180 - .000450 PER SURFACE)

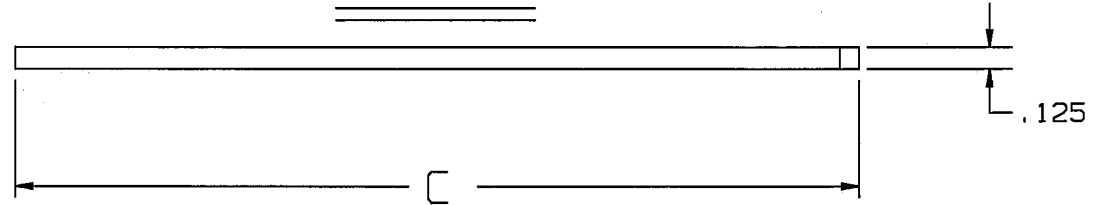
5. TFS-4

4. HEAT TREAT-CASE HARDEN .005-.010

3. WRENCH OPENINGS (DIM D AND E) PER FED-STD-H28, APPENDIX A10

2 STAMP MODEL NO LOCATION APPROXIMATE

1 C1010-1018 CRS



QTY	DESCRIPTION		PART NUMBER	ITEM
TOL UNLESS SPECIFIED				
.XX ±	TROMPETER ELECTRONICS, INC.		AT1 / AT2 ASSY TOOL	
.XXX ±	.015			
.XXXX ±				
ANGLES ±	5°			
DWN	DKC	1-20-99	MATERIAL	CODE IDENT
CHK	<i>[Signature]</i>	1-26-99	1	14949
ENGR				
APPR	JL	1-29-99	SCALE 1/1	DATE 11-8-78
DRAWING NO. 010-0023			REV E	
NEXT ASSY			SHEET	