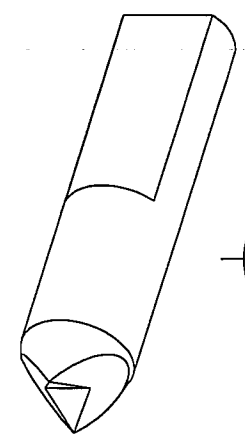


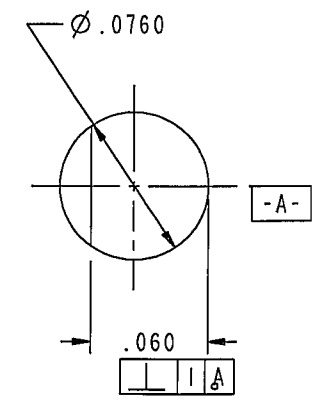
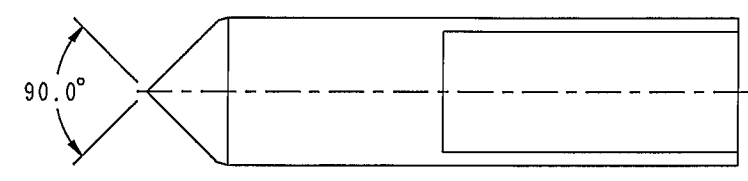
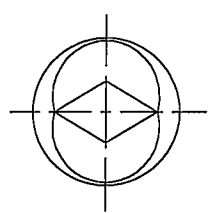
-302 LOCATOR PIN, SHIELD

MATERIAL : SAE 01 TOOL STEEL OR EQUIV
 HARDEN TO Rc 52-58
 TFS-4
 FINISH: BLACK OXIDE PER MIL-C-13924

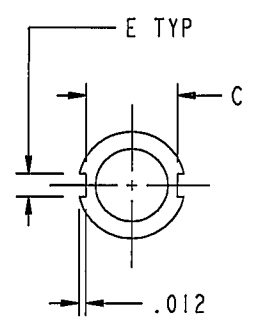
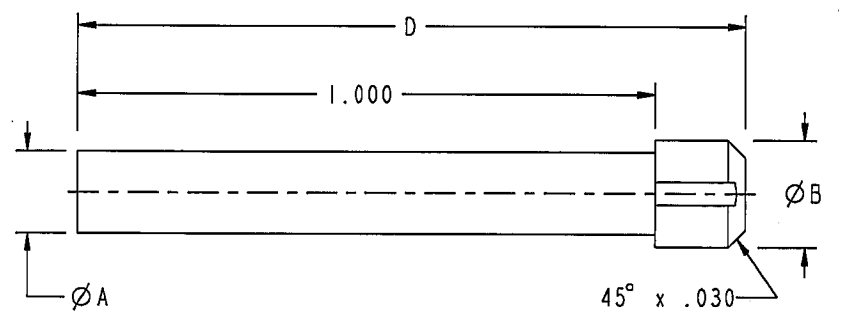
SCALE: 8/1



SCALE 8/1



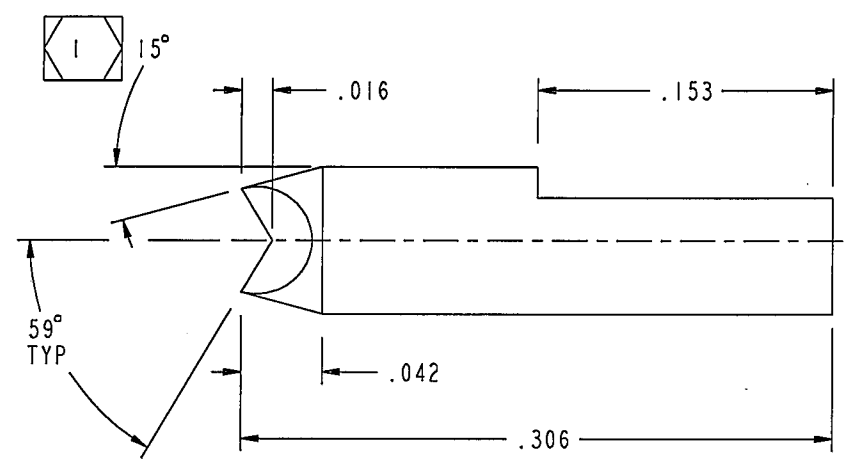
AFTER PLATE DIMS					BEFORE PLATE DIMS					
DASH NO	A DIA	B DIA	C DIM	D DIM	E DIM	A DIA	B DIA	C DIM	D DIM	E DIM
-301	.1420	.1850	.1570	1.156	.0400	.1400	.1830	.1550	1.154	.0420
-304	.1980	.2550	.2260			.1960	.2530	.2240		



-301/-304 CRIMP PIN GAUGE

MATERIAL: SAE 01 TOOL STEEL OR EQUIV
 HARDEN TO Rc 52-58
 TFS-4
 PLATE; ELECTROLESS NICKEL GRADE A, CLASS2, .001 THK
 ±.0001 PER MIL-C-26074A BAKE TO RELIEVE
 HYDROGEN EMBRITTLEMENT

SCALE 3/1



-303 CRIMP PIN, SHIELD

MATERIAL: SAE 01 TOOL STEEL OR EQUIV
 HARDEN TO Rc 52-58
 TFS-4
 FINISH: BLACK OXIDE PER MIL-C-13924

TURNED TAPER

SCALE 10/1

RED INDICATES ORIGINAL

TOL UNLESS SPECIFIED .XX ± .01 .XXX ± .003 .XXXX ± .0010 ANGLE ± 1° 00' CRITICAL	SIZE	CAGE CODE	DRAWING NO.	REV
	B	14949	010-0039	AW
SCALE	9/1	DATE	12/22/83	SHEET
				7 OF 7