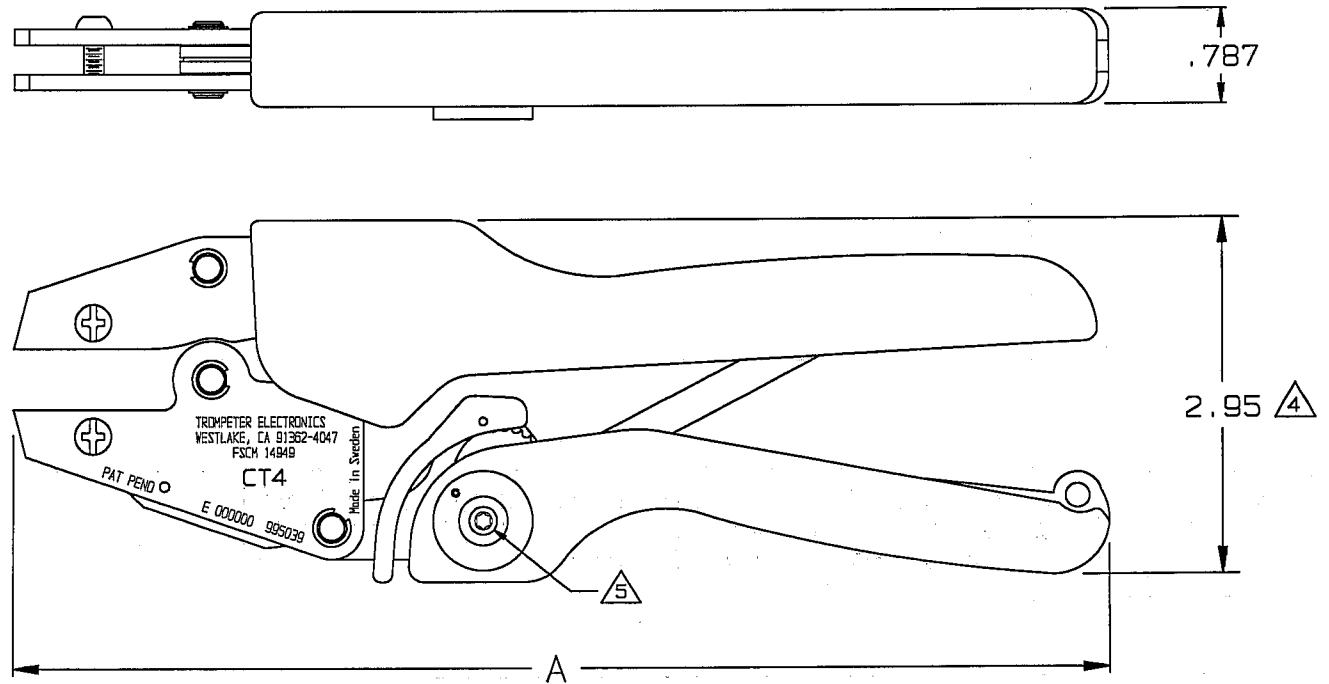


RED INDICATES ORIGINAL

DATA CONTAINED IN THIS DOCUMENT IS PROPRIETARY TO TROMPETER ELECTRONICS, INC. AND SHALL NOT BE DISCLOSED, COPIED OR USED FOR PROCUREMENT OR MANUFACTURE WITHOUT EXPRESS WRITTEN PERMISSION.

REVISIONS			010-0112		SH 1
REV	ECO	DESCRIPTION	DWN	APPROVED	DATE
E	12642	REVISED: VIEW OF SCREW HEAD ADDED: NOTE [5] SHEET 2 SEE ECO	R L	<i>[Signature]</i>	11/19/98

MODEL NO	A DIM
CT4	8.66
CT4L	10.03



CT4 SHOWN

- △ 5 FACTORY SET TO CALIBRATED CLOSURE FORCE
 △ 4 OPEN HANDLE SPAN 7.0 MAX

3. CYCLE CONTROLLED LOW FORCE HAND CRIMPING TOOL FOR INTERCHANGEABLE DIE SETS
 2. FINISH: HAND GRIPS; MOLDED TPE (THERMO PLASTIC POLYMER);
 CT4: BLUE, CT4L: BLACK

FRAME ASSY; BLACK OXIDE COATED CRS
 WITH LASER ENGRAVED MARKING

1. ALL DIM ARE IN INCHES

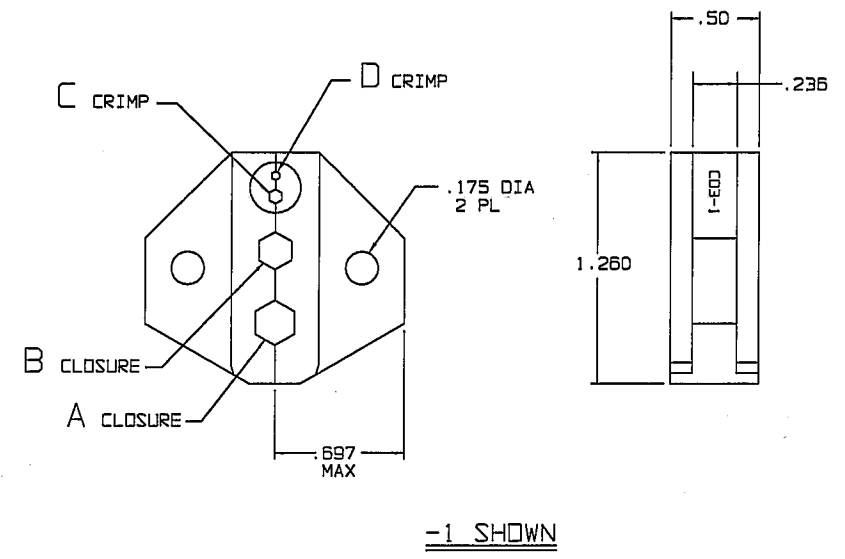
QTY	DESCRIPTION	PART NUMBER	ITEM
TOL UNLESS SPECIFIED .XX ± .03 .XXX ± .010 .XXXX ± ANGLE±	TROMPETER ELECTRONICS, INC.	CT4 KIT	
DWN R L 11/16/98	MATERIAL	CODE IDENT	DRAWING NO.
CHK WM 11-16-98		14949	010-0112
ENGR			REV E
APPR <i>[Signature]</i>	SCALE 1/1	DATE 5-26-95	SHEET 1 OF 2

DATA CONTAINED IN THIS DOCUMENT IS PROPRIETARY TO TROMPETER ELECTRONICS INC. AND SHALL NOT BE DISCLOSED, COPIED OR USED FOR PROCUREMENT OR MANUFACTURE WITHOUT EXPRESS WRITTEN PERMISSION OF TROMPETER ELECTRONICS INC.

REVISIONS 010-0039 SH 1

REV	DESCRIPTION	DATE	APPROVED
AW	REVISED PER ECD 15670	10-12-04	WY

DASH NO	CLOSURE A	CLOSURE B	CLOSURE C	CLOSURE D	CABLE GROUPS ACCOMMODATED
-1	.213 HEX	.178 HEX	.068 HEX	.042 HEX	-001, -003, -004, -007, -008, -009, -010, -011, -012, -021, -026, -027
-2	.324 HEX	.255 HEX	.068 HEX	.042 HEX	-013, -014, -016, -018, -019, -022, -023, -025 (-015, -018 PL130CP)
-3	.344 HEX	.290 HEX	.068 HEX	.042 HEX	-015, -017, -020, -024
-4	.193 SHIELD	.218 HEX	.197 HEX	—	-201, -202, -203, -204, -205, -218
-5	—	.197 HEX	.068 HEX	.042 HEX	-002, -005, -006
-6	.309 HEX	.272 HEX	—	—	-013, -013A, -014 PL130CP ONLY
-7	.263 SHIELD	.344 HEX	—	—	-201 THRU -218 ("70" SERIES ONLY)
-8	.263 SHIELD	.344 HEX	—	—	-207, -210 THRU -216 ("150AC" LG BODY SERIES ONLY)
-9	.193 SHIELD	.255 HEX	—	—	-201 THRU -206, -208, -209, -217, -218 ("150AC" SM BODY SERIES ONLY)
-10	.218 HEX	.165 HEX	—	—	-301 (CJ/PL160C, SPCBP/S)
-11	.255 HEX	.178 HEX	—	—	-025 AT&T (.255), -026 AT&T (.178)
-12	.324 HEX	.151 HEX	—	—	-016 AT&T (.324), -027 AT&T (.151)
-13	.290 HEX	—	—	—	AT&T 619F/627C
-14	.213 HEX	.178 HEX	.068 HEX	.042 HEX	SPECIAL FOR NTI
-15	.255 HEX	.178 HEX	.068 HEX	—	SPECIAL FOR NYNEX
-16	.202 CIRCULAR	.042 BOX	—	—	SPECIAL FOR TELMEX (105-1429/1430)
-17	.255 HEX	.178 HEX	—	—	SPECIAL FOR TELECOM (INDENTS HEX SIZE)
-18	.324 HEX	.178 HEX	—	—	SPECIAL FOR TELECOM (INDENTS HEX SIZE)
-19	.178 HEX	.255 HEX	—	—	-025 AT&T (.255) -026 AT&T (.178)
-20	—	—	—	—	SAVE FOR NBC
-21	.290 HEX	.255 HEX	.042 HEX	—	1694A BELDON, 1505A BELDON, D2, D3, D4, D6, D8, D9, D11, D12
-22	.404 HEX	.068 HEX	—	—	BELDEN 7731A COMMSCOPE 5906, D5
-23	.324 HEX	.290 HEX	—	—	BELDEN 1694A BELDEN 8261
-24	—	.178 HEX	.038 BOX	—	NORTEL CABLE TX 1 THRU 32



RED INDICATES ORIGINAL

- 8. -4, -7, -8 & -9 SUPPLIED WITH HEX WRENCH (.050 HEX) FOR SHIELD CRIMP ADJUSTMENT
- 7. GAUGE HEX CLOSURES PER TGS-3
- △ .068 HEX USED ON 50 OHM CONTACTS & RIGHT ANGLE 75 OHM CONTACTS ONLY. .042 HEX USED ON 75 OHM CONTACTS ONLY
- 5. SET DEPTH OF CRIMP PIN & LOCATOR PIN FOR -7 & -8 POSITION A WITH 010-0039-304 GAUGE PER TAI-136
- 4. SET DEPTH OF CRIMP PIN & LOCATOR PIN FOR -4 & -9 POSITION A WITH 010-0039-301 GAUGE PER TAI-136
- 3. CRIMP DIE SETS FOR USE WITH HAND CRIMP TOOL (CT3, CT4, CT4L)
- 2. FINISH: BLACK OXIDE
- 1. ALL DIM ARE IN INCHES UNLESS OTHERWISE SPECIFIED AND ARE APPLICABLE TO BOTH DIE HALVES EXCEPT CRIMP DIMENSIONS WHICH ARE FOR DIE HALVES IN A MATED CONDITION.

INTERPRET DRAWING PER MIL-STD-100 DIMENSIONS ARE IN INCHES AND INCLUDE FINISH THICKNESS UNLESS OTHERWISE SPECIFIED		TOL: UNLESS SPECIFIED .XX ±.02 .XXX ±.010 .XXXX ANGLE		TROMPETER ELECTRONICS, INC.
DRAWN AAH	DATE 9-30-04	MATERIAL:	TITLE: CD3	
CHECKED WY	DATE 10-5-04	FINISH:	SIZE B 14949	DRAWING NO. 010-0039
QUALITY MS	DATE 10/11/04		SCALE 2/1	DATE 12-22-83
MANUF BP	DATE 10/11			SHEET 1C
APPROVED WY	DATE 10/11/04			REV. AW
NEXT ASSY	CAD FILE NO 010-0039AW	DO NOT SCALE DWG		