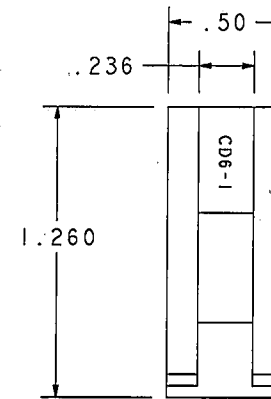
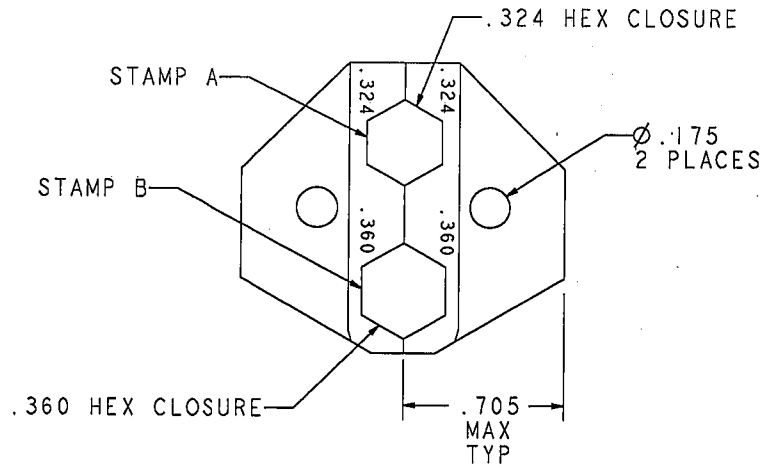


# RED INDICATES ORIGINAL

DASH NO	STAMP A	STAMP B	CABLE GROUP ACCOMMODATED
-1	.324	.360	-F1/-F3 (.360) -F2 (.324)

DATA CONTAINED IN THIS DOCUMENT IS PROPRIETARY TO TROMPETER ELECTRONICS INC. AND SHALL NOT BE DISCLOSED, COPIED OR USED FOR PROCUREMENT OR MANUFACTURE WITHOUT EXPRESS WRITTEN PERMISSION

REVISIONS			010-0127	SH 1	
REV	ECO NO.	DESCRIPTION	DWN	APPROVED	DATE
B	12532	SH 3; DIM "M" WAS .348; DIM "N" WAS .992; SEE ECO	J S	<i>EAM</i>	12/16/98



- 1 SHOWN

INCH	MM
.003	0.08
.02	0.51
.175	4.45
.236	5.99
.324	8.23
.360	9.144
.50	12.70
.705	19.91
1.260	32.00

5. EXAMPLE OF COMPLETE PART NO: CD6 - 1  

BASE P/N
  DASH NUMBER
4. GAUGE HEX CLOSURES PER TGS-3
3. CRIMP DIE SETS FOR USE WITH HAND CRIMP TOOL CT3, CT4, AND CT4L
2. FINISH: BLACK OXIDE
1. ALL DIM ARE IN INCHES UNLESS OTHERWISE SPECIFIED AND ARE APPLICABLE TO BOTH DIE HALVES EXCEPT CRIMP DIMENSIONS WHICH ARE FOR DIE HALVES IN A MATED CONDITION

QTY	DESCRIPTION		PART NUMBER		ITEM
TOL UNLESS SPECIFIED .XX ± .02 .XXX ± .003 .XXXX ± ANGLE ± ⊖ CRITICAL			<b>TROMPETER ELECTRONICS, INC.®</b>		CD6 FOR F-CONNECTOR
DWG	J S	12-7-98	MATERIAL	CODE IDENT	DRAWING NO.
CHK				<b>14949</b>	010-0127
ENGR	<i>EAM</i>	12/14/98			REV B
NEXT ASSY	APPR	<i>EAM</i>	SCALE 2/1	DATE 6-19-97	SHEET IC