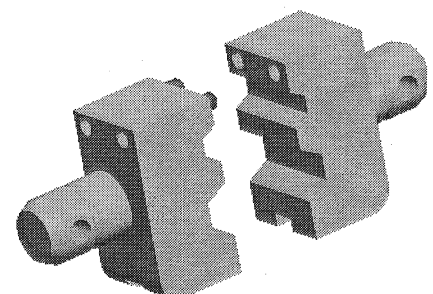


DASH NO	HEX SIZE		C EMOSS	D EMOSS
	CLOSURE A ±.003	CLOSURE B ±.003		
-1	.178	.255	178	255
-2	.255	.290	255	290
-3	.178	.255	178	255
-4			PTI	PTI
-5	.178	.213	178	213
-6	.255	.290	255	290
-7			NCT	NCT
-8	.178	.255	735	734
-9			NCT	NCT
-10			NA06	NA06
			NA09	NA09
			NA10	NA10

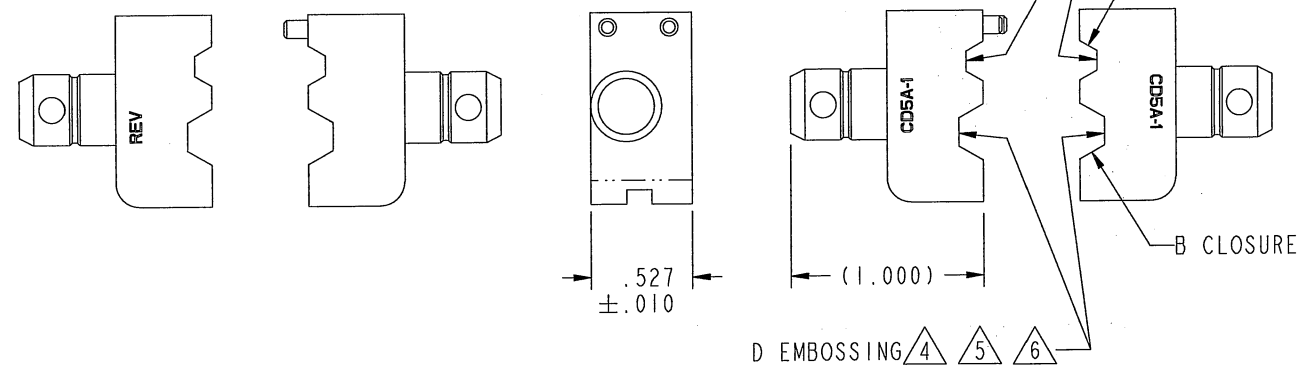
DATA CONTAINED IN THIS DOCUMENT IS PROPRIETARY TO TROMPETER ELECTRONICS INC. AND SHALL NOT BE DISCLOSED, COPIED OR USED FOR PROCUREMENT OR MANUFACTURE WITHOUT EXPRESS WRITTEN PERMISSION.

REVISIONS			
REV	DESCRIPTIONS	DATE	APPROVED
M	REVISED PER ECO 16488	11/5/07	AMC



RED INDICATES ORIGINAL

△5
△5
△6



- △6 ONE HALF OF DIE EMBOSSED WITH CABLE TYPE (i.e. 734)
OTHER HALF EMBOSSED WITH CUSTOMER'S INITIALS (i.e. NCT)
 - △5 ONE HALF OF DIE EMBOSSED WITH DIMENSION (i.e. 178)
OTHER HALF EMBOSSED WITH CUSTOMER'S INITIALS (i.e. PTI)
 - △4 DIE TO BE LASER ETCHED OR STAMPED PER TABLE
CHARACTER TO BE IN REVERSE .078 GOTHIC PER LOCATION C AND D.
3. CRIMP DIE SET FOR USE IN M22520/5-01 TYPE CRIMPERS
 2. FINISH: BLACK OXIDE.
 1. ALL DIMENSIONS ARE APPLICABLE TO BOTH DIE HALVES EXCEPT CRIMP DIMENSIONS WHICH ARE FOR DIE HALVES IN A MATED CONDITION.

NOTES: UNLESS OTHERWISE SPECIFIED.

INTERPRET DRAWING PER MIL-STD-100. DIMENSIONS ARE IN INCHES AND INCLUDE FINISH THICKNESS UNLESS OTHERWISE SPECIFIED.		TOL: UNLESS SPECIFIED. .XX ± .01 .XXX ± .003 .XXXX ± .0010 ANGLE ± 1° 00' CRITICAL			
DRN	L.M.	10-30-07	MATERIAL:	TITLE: CD5A	
CHK	AM	11/2/07	FINISH:		
QUALITY			SIZE	CAGE CODE	DRAWING NO.
MANUF			A	14949	010-0160
APPROVED	AM 11/2/07		SCALE	DATE	REV.
PROT FILE NO.	010-0160		1/1	3/31/00	M
NEXT ASSY	DO NOT SCALE DWG		SHEET	IC	