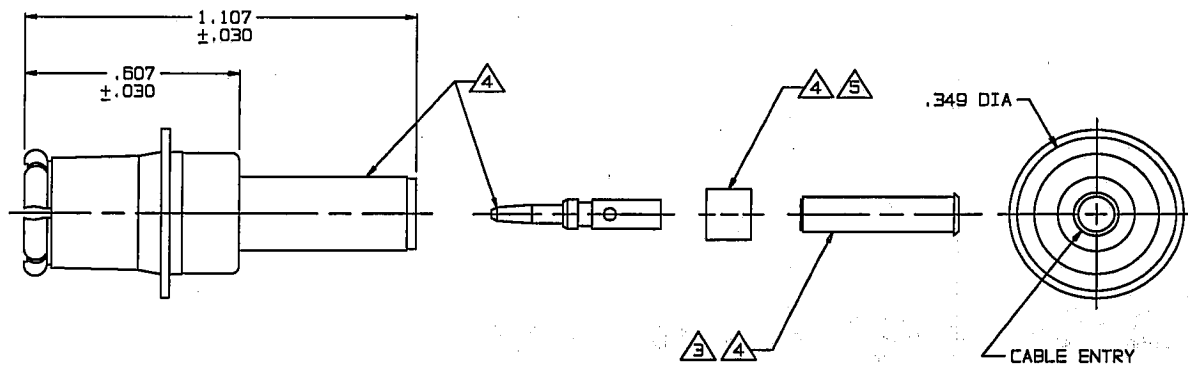


RED INDICATES ORIGINAL

DATA CONTAINED IN THIS DOCUMENT IS PROPRIETARY TO TROMPETER ELECTRONICS, INC. AND SHALL NOT BE DISCLOSED, COPIED OR USED FOR REPRODUCTION OR MANUFACTURE WITHOUT EXPRESS WRITTEN PERMISSION.

REVISIONS			1-0009	SH 1C
REV	EO	DESCRIPTION	DWN	APPROVED DATE
R	12800	REVISED BOM, SHEET 2; REDRAW PICTORIAL VIEWS; SEE ECD	DKC	7/19/99

DASH NO	CABLES ACCOMMODATED	A HEX	ASSEMBLE PER	
-001	RG-178,-196	.178	TAI-A118	
-002	HEWLETT PACKARD 8120-1107	.197		
-003	RG-174,-188,-316	.178		
-004	RG-179,-187			
-005	NORTHERN ELECTRIC DBL-SHLD RG-168	.197		
-006	GRUMMAN-GC875GPI DBL-SHLD RG-187			
-007	275-3991 MICRODOT			
-008	RG-195,-180 421-111 ESSEX			
-009	8218 BELDEN YR23023 BELDEN 21-597 ESSEX	.178		
-010	RG-122			
-011	RG-58,-141,-303 21-537 ESSEX	.213	TAI-A118	
-012	RG-55,-142,-223 RG-400			
-013	RG-59	.255		TAI-C118
-013A	TCC-75-2			
-013B	RG-62			
-014	8212 BELDEN			
-015	730A AT&T	.290		TAI-A118
-015A	RG-71			TAI-C118
-016	724 AT&T 8281 BELDEN	.324		TAI-A118
-017	RG-6	.344		
-018	9268 BELDEN	.255		
-019	8279 BELDEN			
-020	9248 BELDEN	.290		
-021	88240 BELDEN	.213		
-022	88241,89269 BELDEN	.255	TAI-C118	
-023	89108 BELDEN			
-024	89120 BELDEN	.290	TAI-A118	
-025	734A, AT&T	.255		
-026	735A, AT&T	.178		
-027	KS19224LS, AT&T			



-001 SHOWN

INCH	MM
.005	0.13
.030	0.76
.178	4.52
.197	5.00
.213	5.41
.255	6.48
.290	7.37
.324	8.23
.344	8.73
.349	8.86
.607	15.42
1.107	28.12

6 FOR CABLE GROUP -011 SUPPLY 1 EA ACC011
FOR CABLE GROUPS-013, -013A & -013B SUPPLY 1 EA ACC013
MAY BE ASSEMBLED TO CABLE/CONNECTOR ASSEMBLY USING 3M
SCOTCHGRIP NO 1099 PLASTIC ADHESIVE OR EQUIVALENT

7 IF PLASTIC STRAIN RELIEF REQUIRED, ADD SUFFIX
"BT" TO MODEL NO (ONLY AVAILABLE WITH
-011, -013, -013A & -013B)

8 CONTACT SUPPORT BUSHING REQUIRED ON
-013B, -015A & -022 ONLY

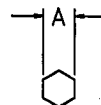
5. MALE COAXIAL PUSH-ON FULL CRIMP CABLE
PLUG (BNC TYPE)

4 PIN, SLEEVE, CRIMP SLEEVE & CONTACT SUPPORT BUSHING
ARE SUPPLIED LOOSE

3 SLEEVE REQUIRED ON -001 THRU -007 & -027 ONLY

2. FINISH: TFS-1A (NICKEL)

1. ALL DIM ARE IN INCHES



RECOMMENDED
HEX CRIMP

QTY	DESCRIPTION	PART NUMBER	ITEM
TOL UNLESS SPECIFIED .10X ± .100X ± .005 .3000X AND ETC	TROMPETER ELECTRONICS, INC.	PL223	
DWN / DKC 3-16-99	MATERIAL	CODE IDENT	DRAWING NO.
CHK / [Signature]		14949	1-0009
ENGR / [Signature]			R
APPR / [Signature]	SCALE 4/1	DATE 5/12/92	SHEET 1C

NEXT ASSY	APPR	SCALE 4/1	DATE 5/12/92	SHEET 1C
-----------	------	-----------	--------------	----------