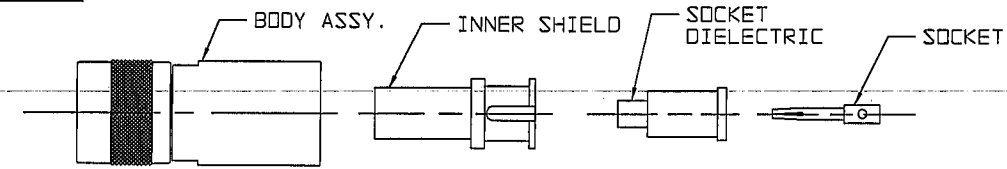


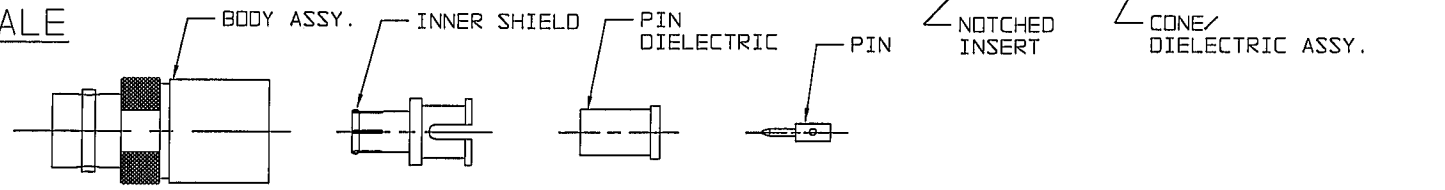
DATA CONTAINED IN THIS DOCUMENT IS PROPRIETARY TO TROMPETER ELECTRONICS, INC. AND SHALL NOT BE DISCLOSED, COPIED OR USED FOR PROCUREMENT OR MANUFACTURE WITHOUT EXPRESS WRITTEN PERMISSION OF TROMPETER ELECTRONICS, INC.

REVISIONS		TAI-124	SH 1
REV	DESCRIPTION	DATE	APPROVED
E	REVISED PER ECD 15715	11/19/04	WJ

MALE



FEMALE



ASSEMBLY INSTRUCTIONS

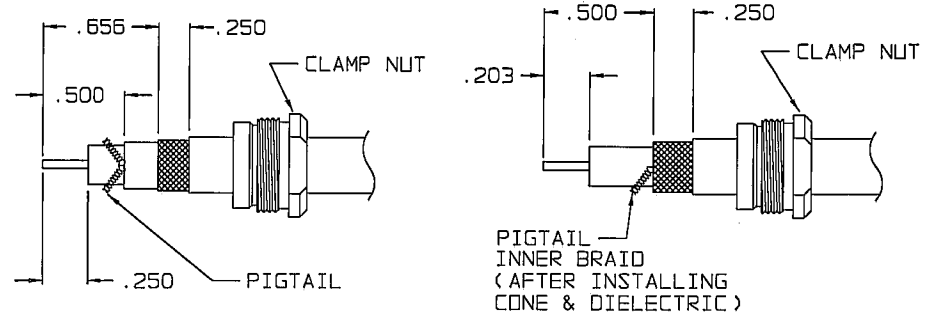
"WRENCH CRIMP" 80 SERIES TRIAX CONNECTORS TO 1/4" & 1/2" DIA. TRIAX CABLE

TROMPETER
ELECTRONICS, INC.
5550 E. McDowell Road
Mesa, Arizona USA 85215
1(800)778-4401 Fax:1(480)985-0334
Mfg. Code No. 14949
www.trompeter.com

RED INDICATES ORIGINAL

TAI-124 REV E

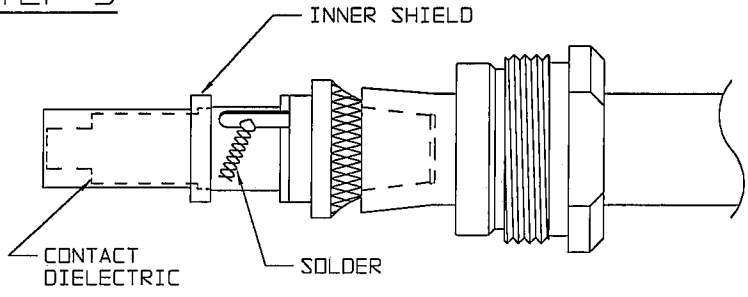
STEP 1



FOR CABLE GROUP-14A & -15 ALL OTHER CABLE GROUPS

- PLACE CLAMP NUT ONTO CABLE.
- STRIP CABLE AS REQD AND FLARE OUTER BRAID.
- LIGHTLY TIN CENTER CONDUCTOR.

STEP 3



- PLACE CONTACT DIELECTRIC OVER CONTACT UNTIL BOTTOMED.
- INSTALL INNER SHIELD OVER CONTACT DIELECTRIC AND NOTCHED INSERT UNTIL SEATED AGAINST CONE DIELECTRIC, WITH PIGTAIL(S) THRU SLOT(S).
- WRAP PIGTAIL(S) BETWEEN RIDGES AND SOLDER, BEING CAREFUL NOT TO ALLOW SOLDER OR BRAID TO EXTEND ABOVE RIDGES.

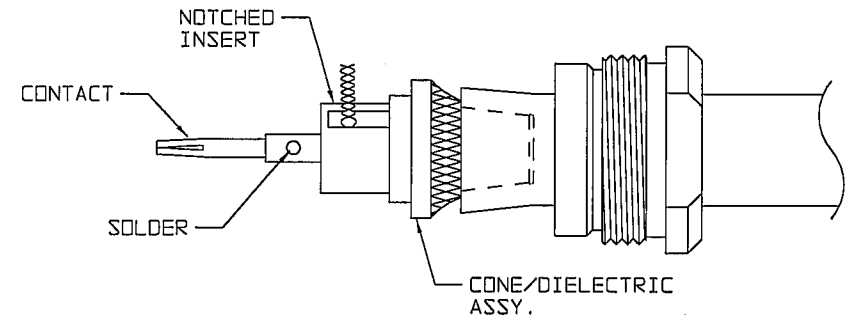
ASSEMBLY INSTRUCTIONS

"80 SERIES"

- PRODUCTS
- PATCH PANELS, PATCH CORDS, JACKS, LOOPING PLUGS
 - POWER DIVIDERS, RF CONNECTORS
 - TWINAX, TRIAX, QUADRAX COMPONENTS
 - SYSTEMS

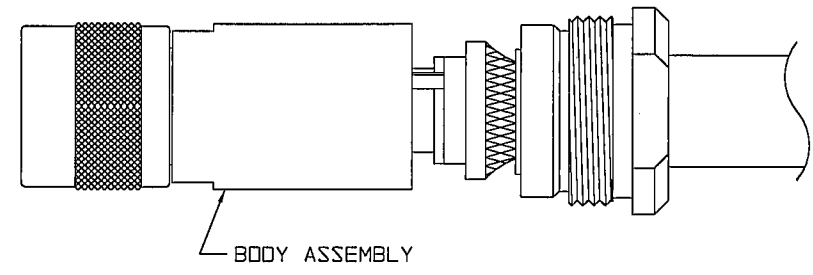
- APPLICATIONS
- COMPUTERS - TV BROADCAST - CATV - CCTV - ETV
 - COMMUNICATIONS - TELEPHONE - TELEMETRY
 - AIRCRAFT - NUCLEAR AND INDUSTRIAL
- INSTRUMENTATION
- PROCESS CONTROLS - SECURITY EQUIPMENT
 - AUTOMATIC TESTING - INFORMATION RETRIEVAL
 - MICROWAVE DATA TRANSMISSION

STEP 2



- PUSH CONE/DIELECTRIC ASSY UNDER OUTER BRAID UNTIL BRAID IS FLUSH WITH EDGE OF CONE.
- PIGTAIL INNER BRAID, INSTALL NOTCHED INSERT WITH PIGTAIL(S) THRU SIDE SLOT(S).
- POSITION CONTACT ON CENTER CONDUCTOR AND SOLDER IN PLACE.

STEP 4



- BRING CLAMP NUT UP ONTO TAPERED PORTION OF CABLE.
- ASSEMBLE BODY ASSY OVER ENTIRE ASSEMBLY AND ENGAGE WITH CLAMP NUT.
- WRENCH TIGHTEN TO 30-40 IN LB TORQUE.

MADE IN USA

<p>INTERPRET DRAWING PER MIL-STD-100 DIMENSIONS ARE IN INCHES AND INCLUDE FINISH THICKNESS UNLESS OTHERWISE SPECIFIED</p>		<p>TOL: UNLESS SPECIFIED .XX .XXX .XXXX ANGLES</p>			<p>TITLE: ASSEMBLY INSTRUCTIONS 80 SERIES TO TRIAX CABLE</p>
<p>DRAWN: AAH CHECKED: Tisha QUALITY: MS MANUF: BCP APPROV: WJ</p>	<p>DATE: 11-18-04 11/19 11/18/04</p>	<p>MATERIAL:</p>	<p>FINISH:</p>		
<p>REVISIONS</p>		<p>DATE: 1-3-89</p>		<p>SHEET 1 OF 1</p>	

NEXT ASSY