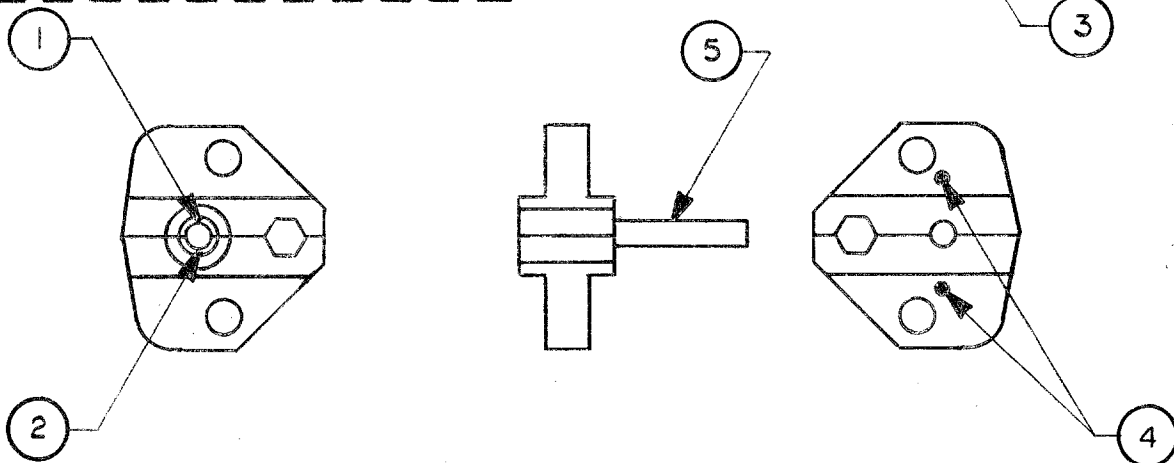
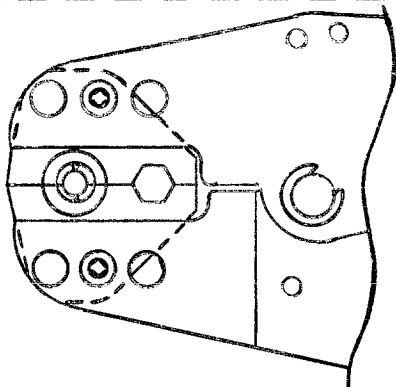


DATA CONTAINED IN THIS DOCUMENT IS PROPRIETARY TO TROMPETER ELECTRONICS INC. AND SHALL NOT BE DISCLOSED, COPIED OR USED FOR PROCUREMENT OR MANUFACTURE WITHOUT EXPRESS WRITTEN PERMISSION.

REV	EO	TAI-126		SH
LTR	NO	DWN	APPROVED	DATE
A	6306	CMF	<i>[Signature]</i>	5/1/83

VIEW A



⚠️ BEFORE PLACING DIE SET INTO CRIMP TOOL, ADJUST CRIMP PIN & LOCATOR PIN WITH CRIMP PIN GAUGE. PLACE CRIMP PIN GAUGE BETWEEN DIE HALVES UNTIL FULLY INSERTED. WITH DIES HELD COMPLETELY CLOSED, ADJUST ITEM 1 & 2 UNTIL BOTTOMED AGAINST GAUGE. LOCK CRIMP PIN & LOCATOR PIN BY TIGHTENING ITEM 4, REMOVE GAUGE & ASSEMBLE DIES INTO CRIMP TOOL AS SHOWN IN VIEW A

⚠️ FLAT END, ALLOY STEEL CD PL OR BLACK FINISH WITH NYLOCK OR PATCH

⚠️ CUP POINT, ALLOY STEEL CD PL OR BLACK FINISH

⚠️ 3	1	CRIMP PIN GAUGE	0100-0035-301	5
⚠️ 1	2	HEX SOCKET SET SCREW	4-40 X .125 L	4
⚠️ 2	2	HEX SOCKET SET SCREW	3-48 X .218 L	3
	1	LOCATOR PIN, SHIELD	0100-0036-2	2
	1	CRIMP PIN SHIELD	0100-0036-3	1
	QTY	DESCRIPTION	PART NUMBER	ITEM

UNLESS OTHERWISE SPECIFIED ALL DIM ARE REF IN INCHES

TROMPETER
ELECTRONICS, INC.

0100-0036-7 DIE SET GAGING INSTRUCTION

DWN	BAT	2-1-83	MATERIAL	CODE IDENT	DRAWING NO.	REV
CHK	<i>RS</i>	2-1-83	—	14949	TAI-126	A
ENGR	<i>TH</i>	2-1-83	SCALE	DATE	2-1-83	SHEET
NEXT ASSY	APPR	<i>[Signature]</i>	2-1-83			