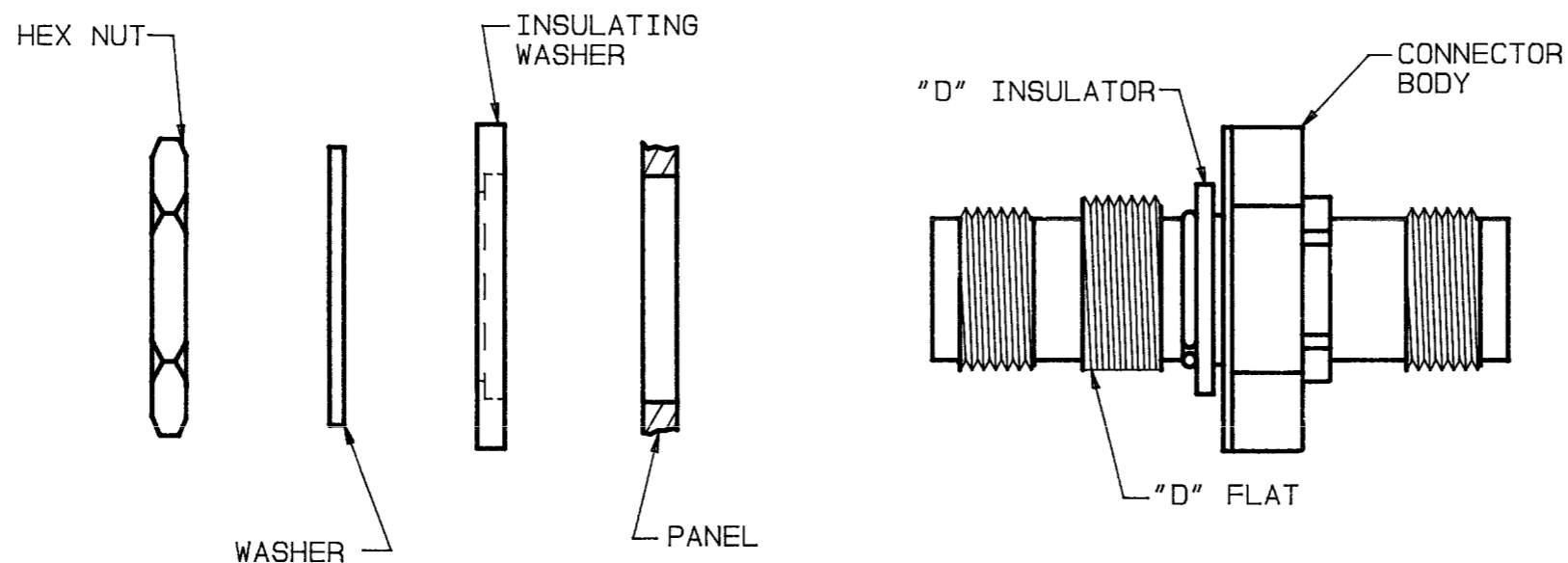


DISK #
W7

DATA CONTAINED IN THIS DOCUMENT IS PROPRIETARY TO TROMPETER ELECTRONICS INC. AND SHALL NOT BE DISCLOSED, COPIED OR USED FOR PROCUREMENT OR MANUFACTURE WITHOUT EXPRESS WRITTEN PERMISSION.

REVISIONS			TAI-147		SH
REV	EO	DESCRIPTION	DWN	APPROVED	DATE
A	8606	WASHER WAS SPRING LOCK WASHER, REDRAWN	DKC	<i>OH, BM</i>	8-16-89

INSTALLATION CAUTION: UNIT CONTAINS BREAKABLE CERAMIC CAPACITOR



- A. ALIGN FLAT OF "D" INSULATOR WITH "D" FLAT OF PANEL CUTOUT
- B. INSTALL INSULATING WASHER FOLLOWED BY WASHER AND HEX NUT
- C. HOLD CONNECTOR BODY RIGID, BY WRENCH FLATS (.875) ON FLANGE AND WRENCH TIGHTEN HEX NUT TO 25 IN LB MAXIMUM INSTALLATION TORQUE

QTY	DESCRIPTION		PART NUMBER	ITEM
TOL UNLESS SPECIFIED		TROMPETER ELECTRONICS, INC.	BJ28GF/BJ48GF	
.XX ±				
.XXX ±				
.XXXX ±				
ANGLES ±				
DWN	DKC	8-8-89	MATERIAL	CODE IDENT
CHK	<i>OH</i>	8/11/89	—	14949
ENGR	<i>BM</i>	8/14/89		DRAWING NO. TAI-147
APPR	<i>OH</i>	8/16/89	SCALE —	DATE 1-23-89
NEXT ASSY				SHEET

REV
A